



**Embracing positive living
for our people**



South African National HIV Prevalence, Incidence and Behavior Survey, 2012

Launch of the Report
HSRC, Pretoria, Cape Town & Durban
April 1, 2014



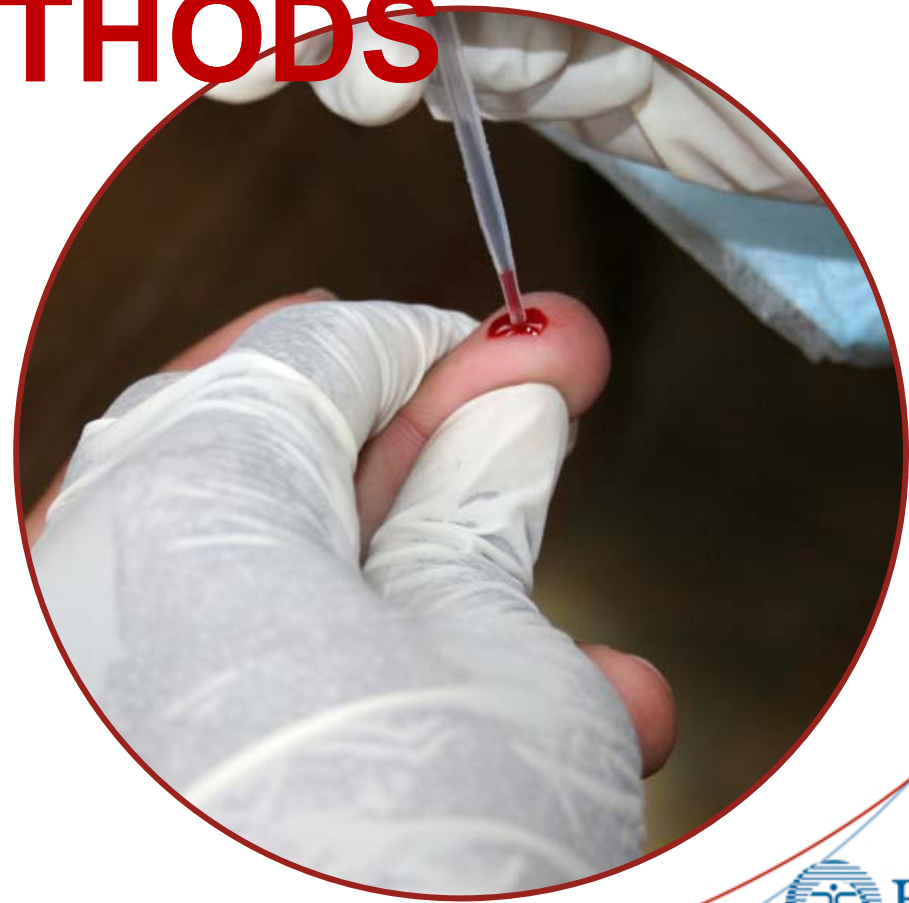
Background

- This is the fourth national population-based survey, three similar surveys were conducted by the same team in 2002, 2005 and 2008.
- The study has provided an important gauge of the HIV epidemic of South Africa.
- The results are used to both inform and evaluate important health programmes such as the National Strategic Plan (NSP) on HIV/AIDS, STI and TB, and the National Health Insurance, among others.

Objectives of the survey

- Main survey objectives:
 - to obtain national, representative data for the entire population
 - to estimate HIV prevalence & HIV incidence
 - to measure behavioral / socio-demographic and health indicators
- Reporting domains:
 - Age
 - Sex
 - Race
 - Locality type
(urban formal, urban informal, rural formal, rural informal)
 - Province

RESEARCH DESIGN AND METHODS





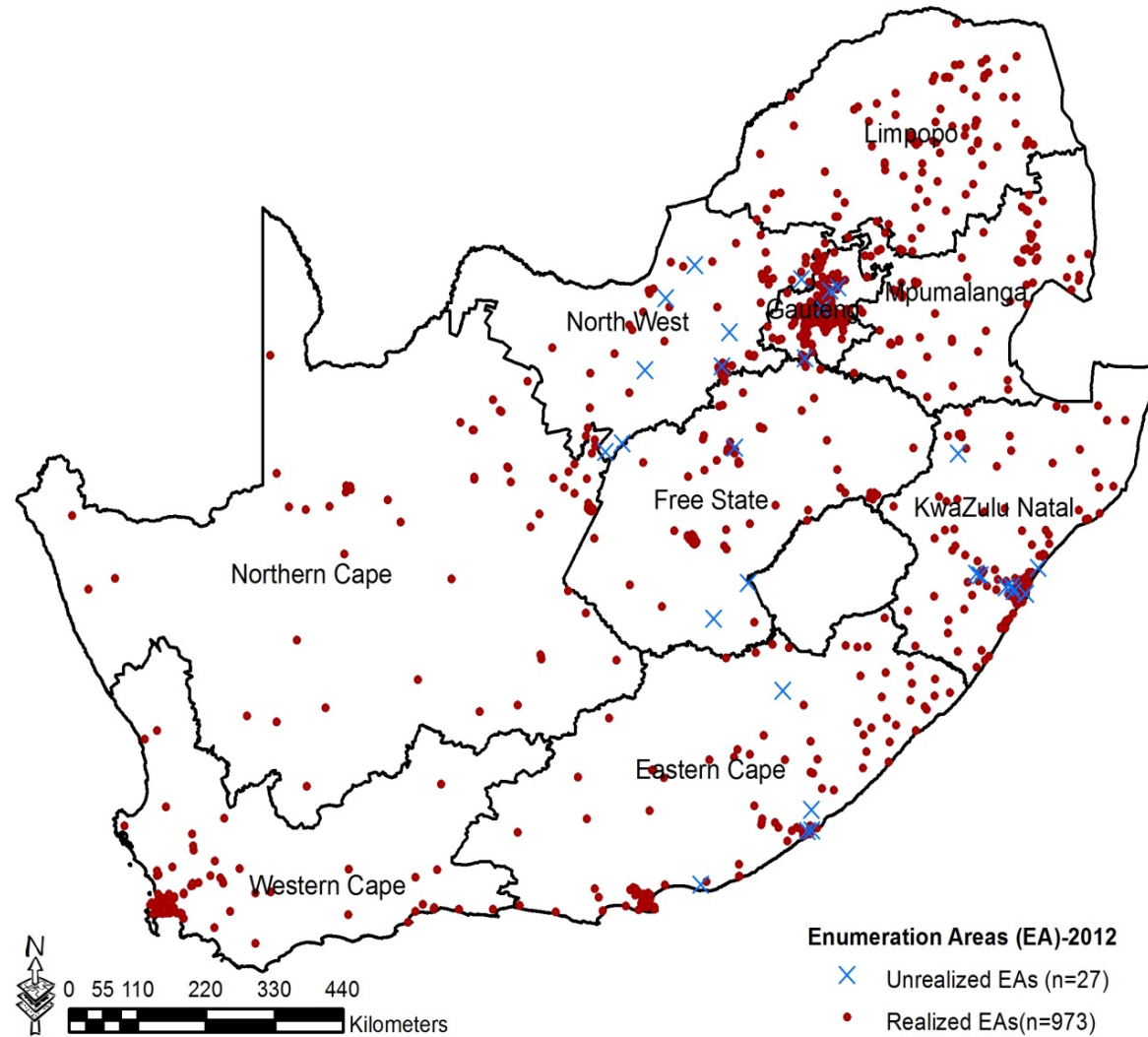
Sampling Designs

Multi-stage cluster sampling
Linked anonymous HIV testing

Study population:
≥ 2 years in 2002 & 2005;
under 2 year olds included in 2008 & 2012

Specimens:
2002 oral; 2005, 2008, 2012 dried blood spot

Realised and unrealised EAs, South Africa 2012



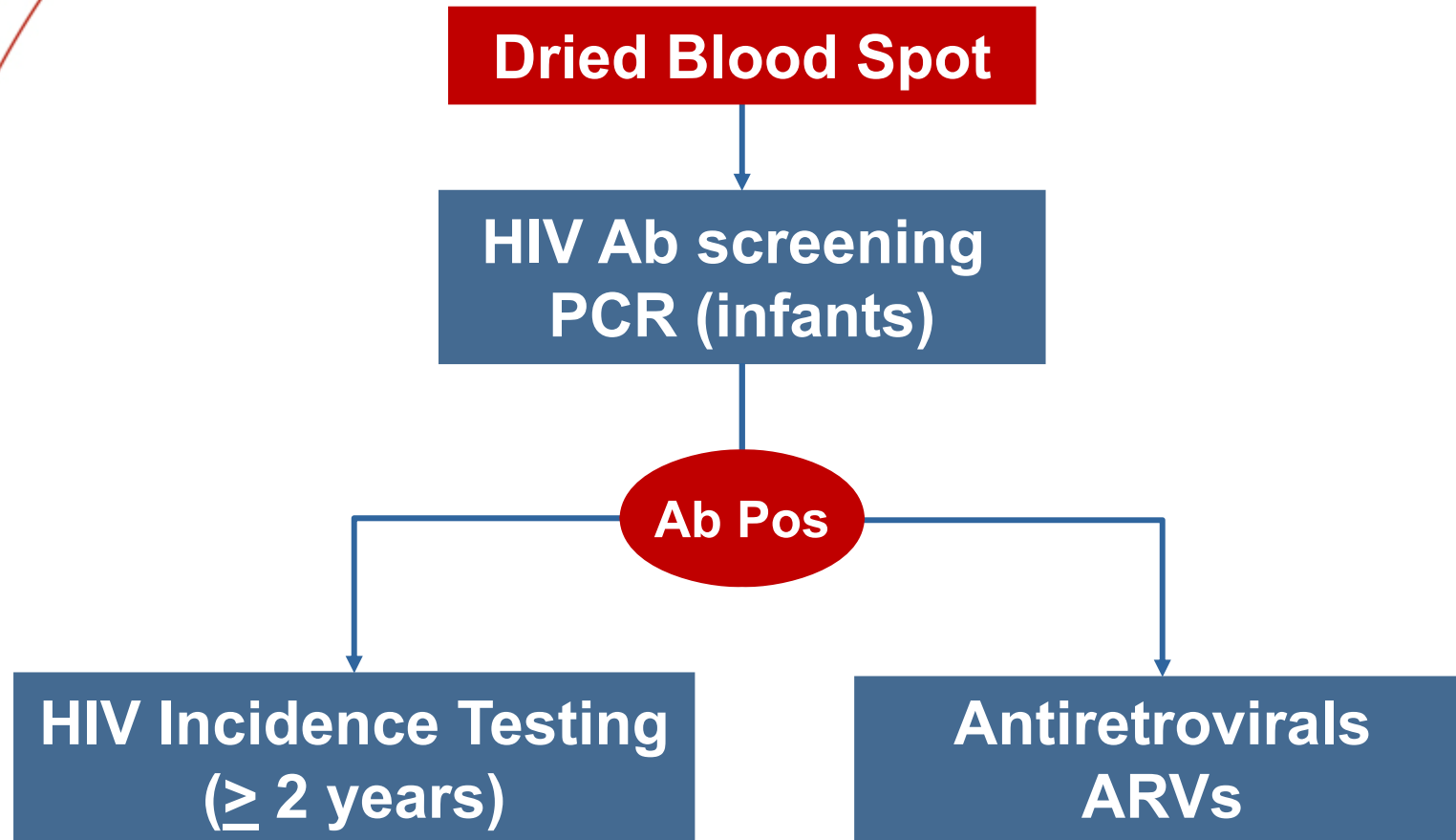


National HIV Household Survey South Africa 2012

- Survey period: January 2012 – November 2012
- All age groups eligible

- **38,431 interviewed**
- **28,997 tested for HIV**

Laboratory Testing



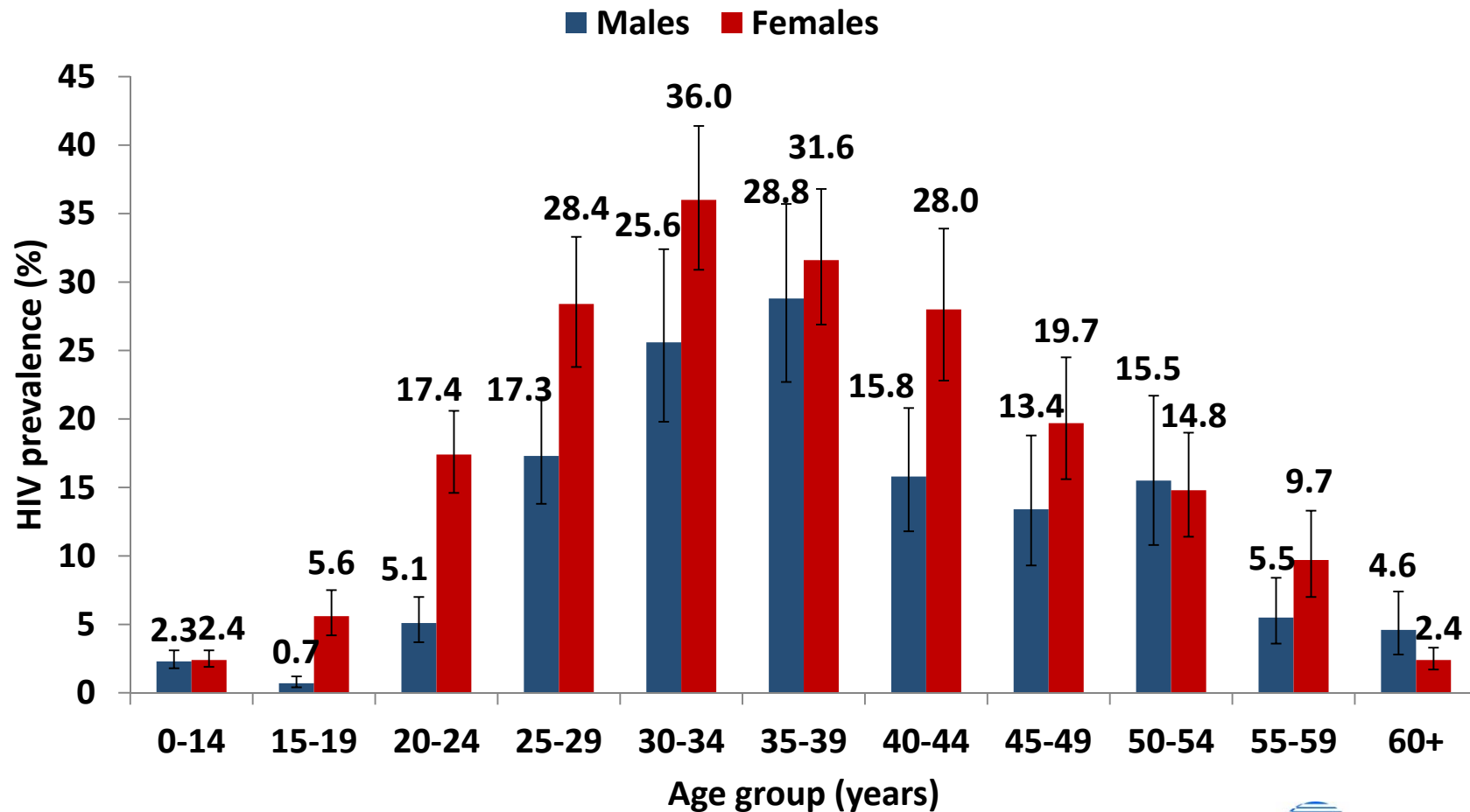
HIV PREVALENCE



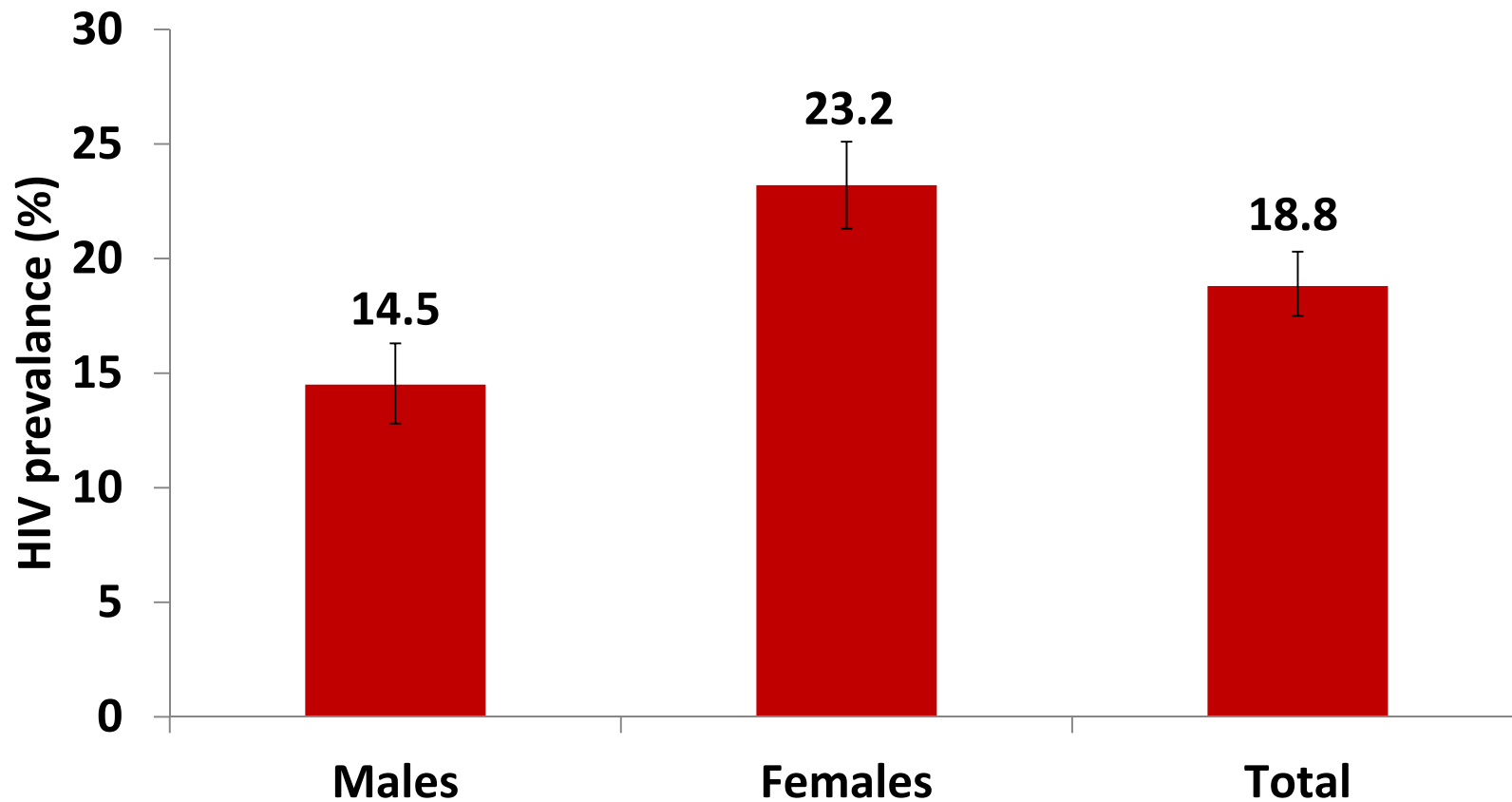
National HIV Household Survey South Africa 2012

- HIV prevalence, total population:
12.2% (2008: 10.6%)
 - **6.4 million living with HIV/AIDS**
(based on Statistics South Africa's mid-year
population estimate for 2012: **52.3 million**)

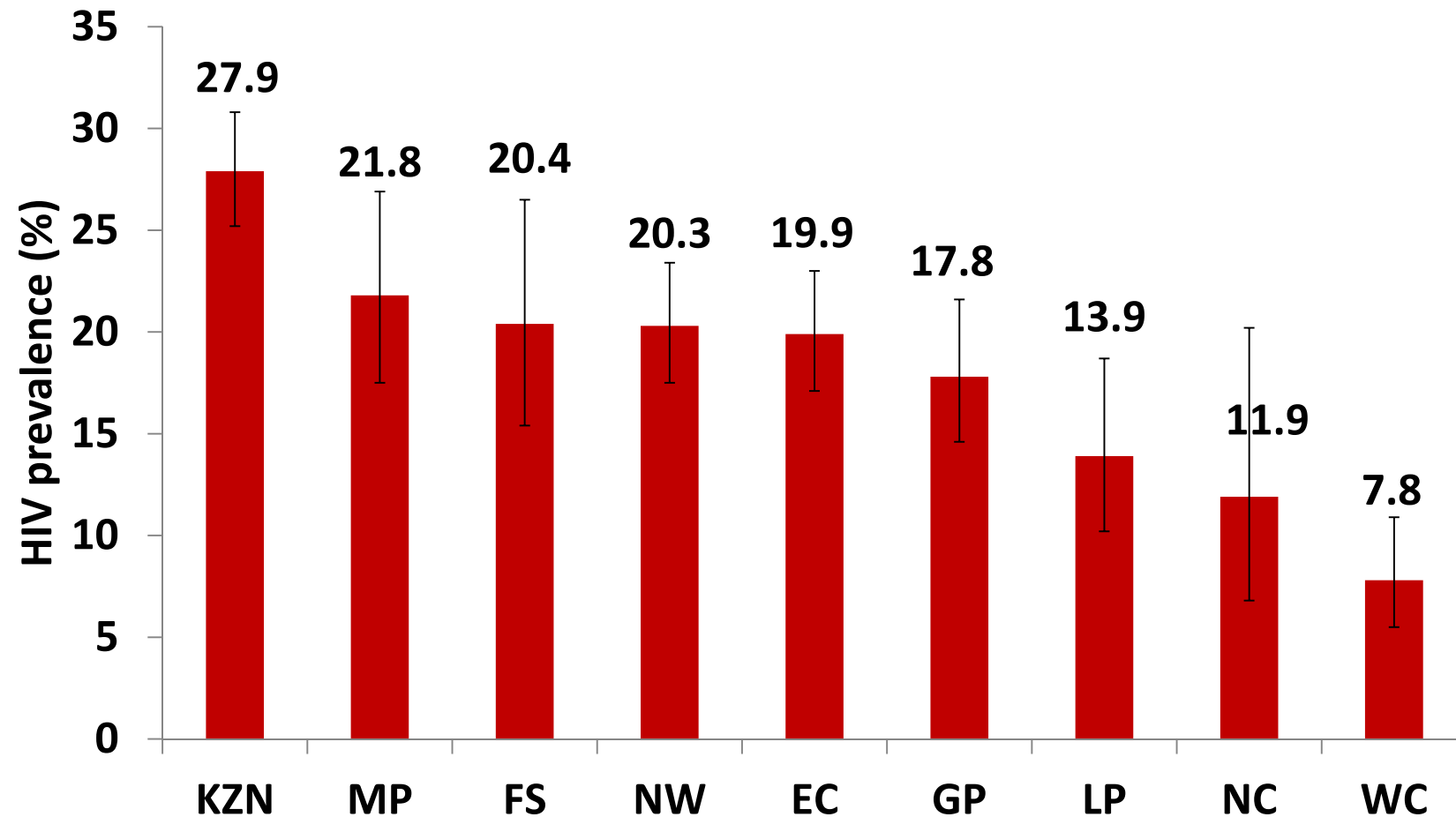
HIV prevalence by age and sex, South Africa, 2012



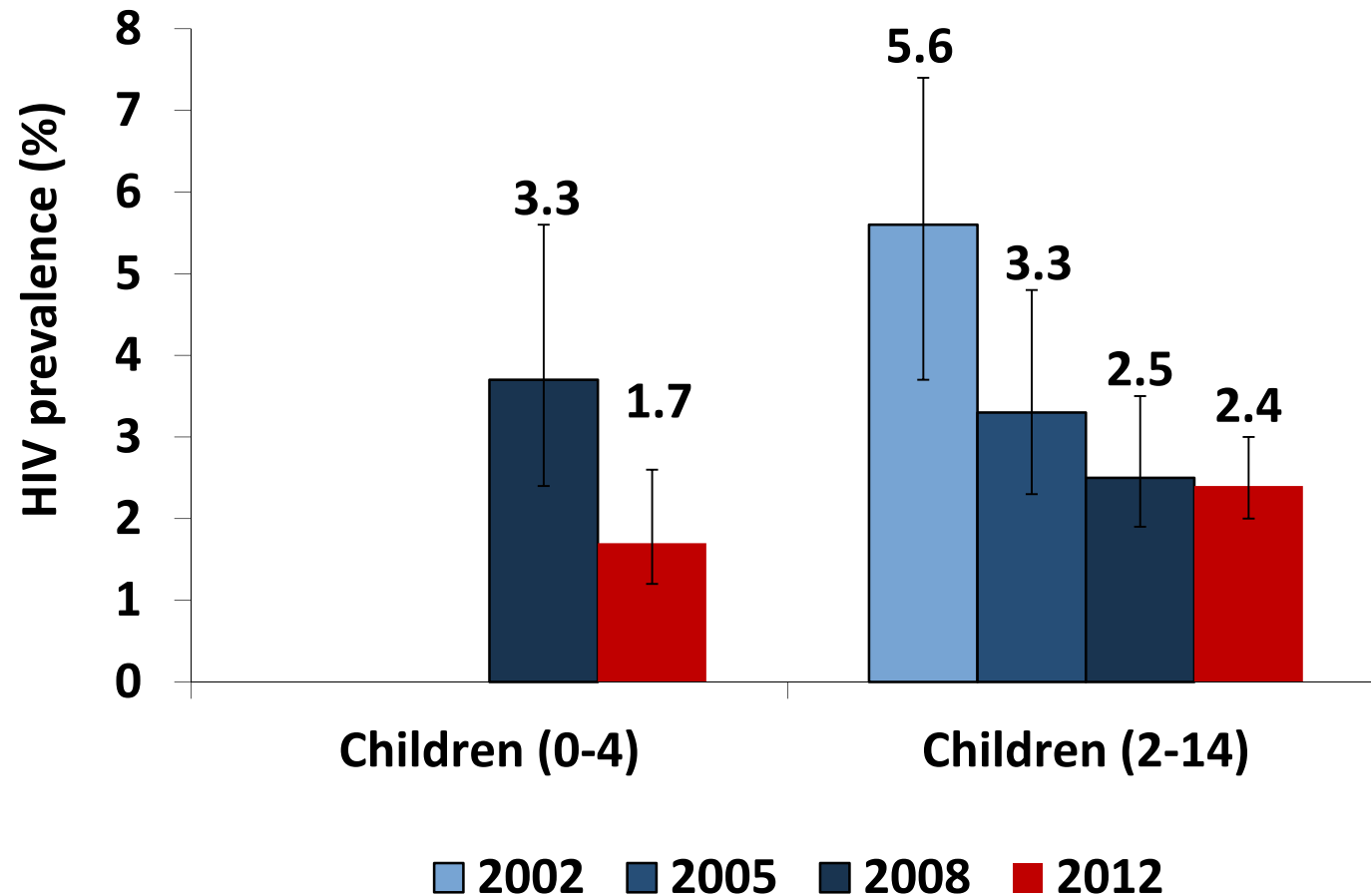
HIV prevalence by sex (15-49 years), South Africa, 2012



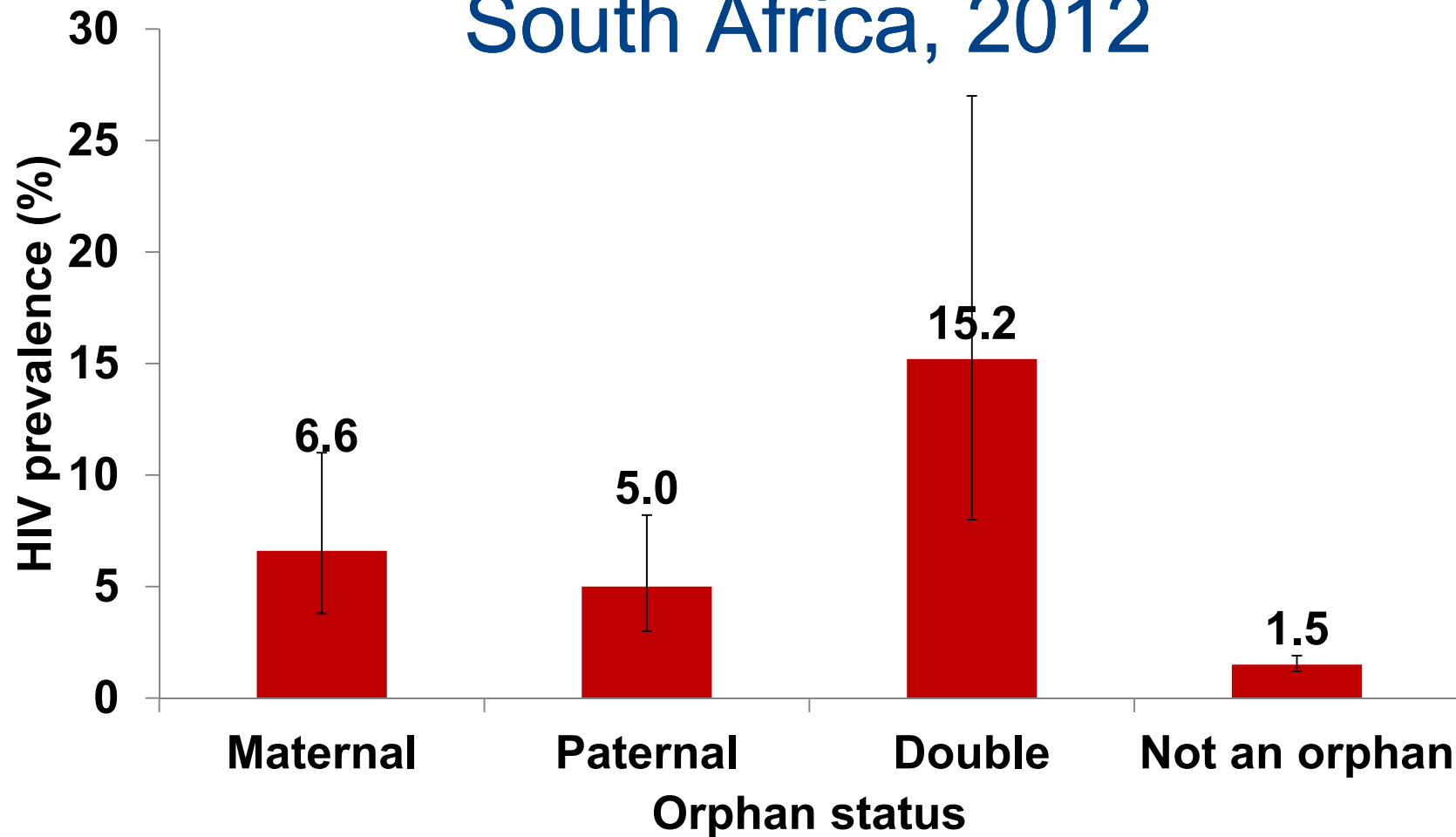
HIV prevalence by province (15-49 years), South Africa, 2012



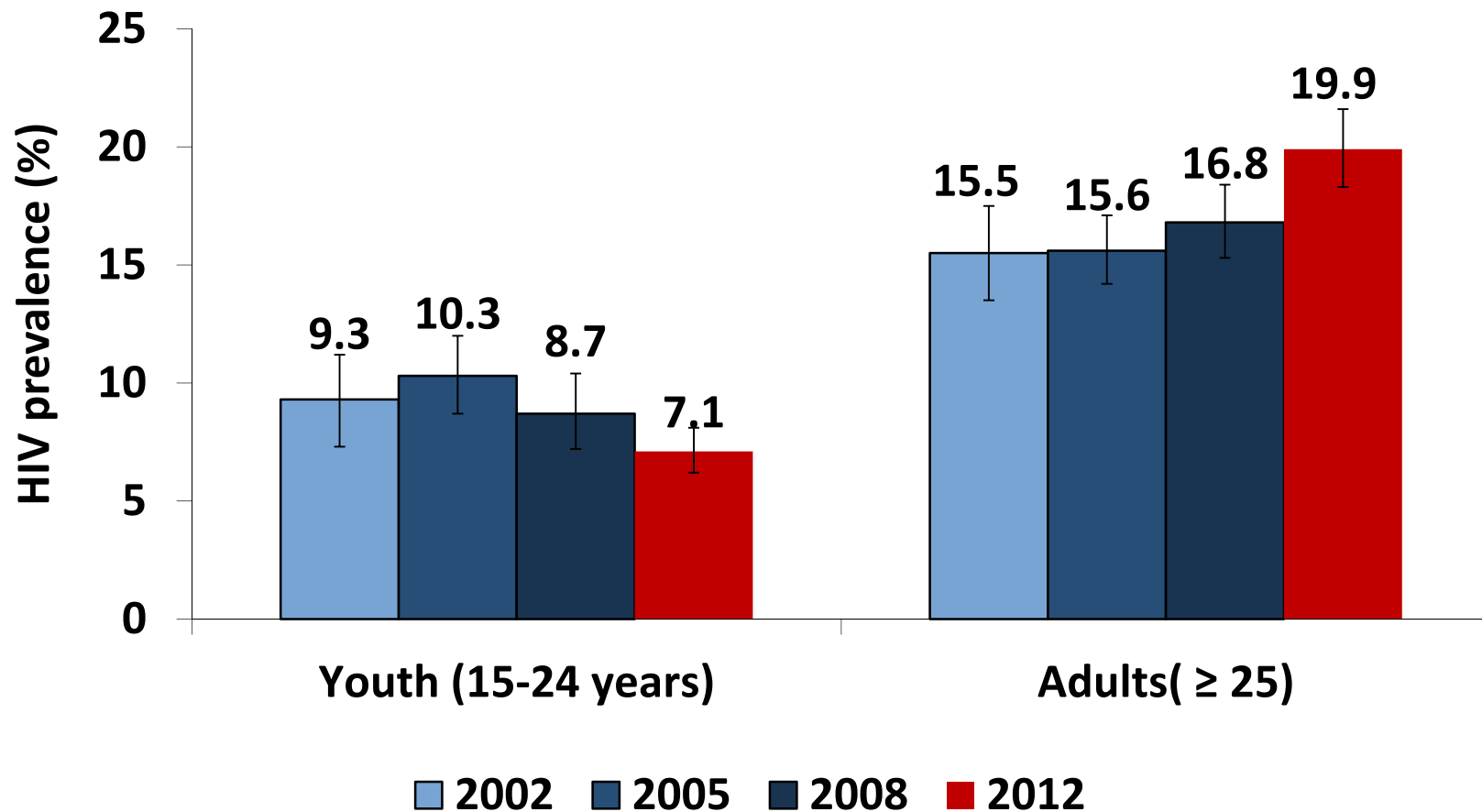
Trends in HIV prevalence in children, South Africa 2002-2012



HIV prevalence by orphanhood status among children 0-14 years, South Africa, 2012



Trends in HIV prevalence by age, South Africa 2002-2012



ANTIRETROVIRAL TREATMENT (ART) EXPOSURE



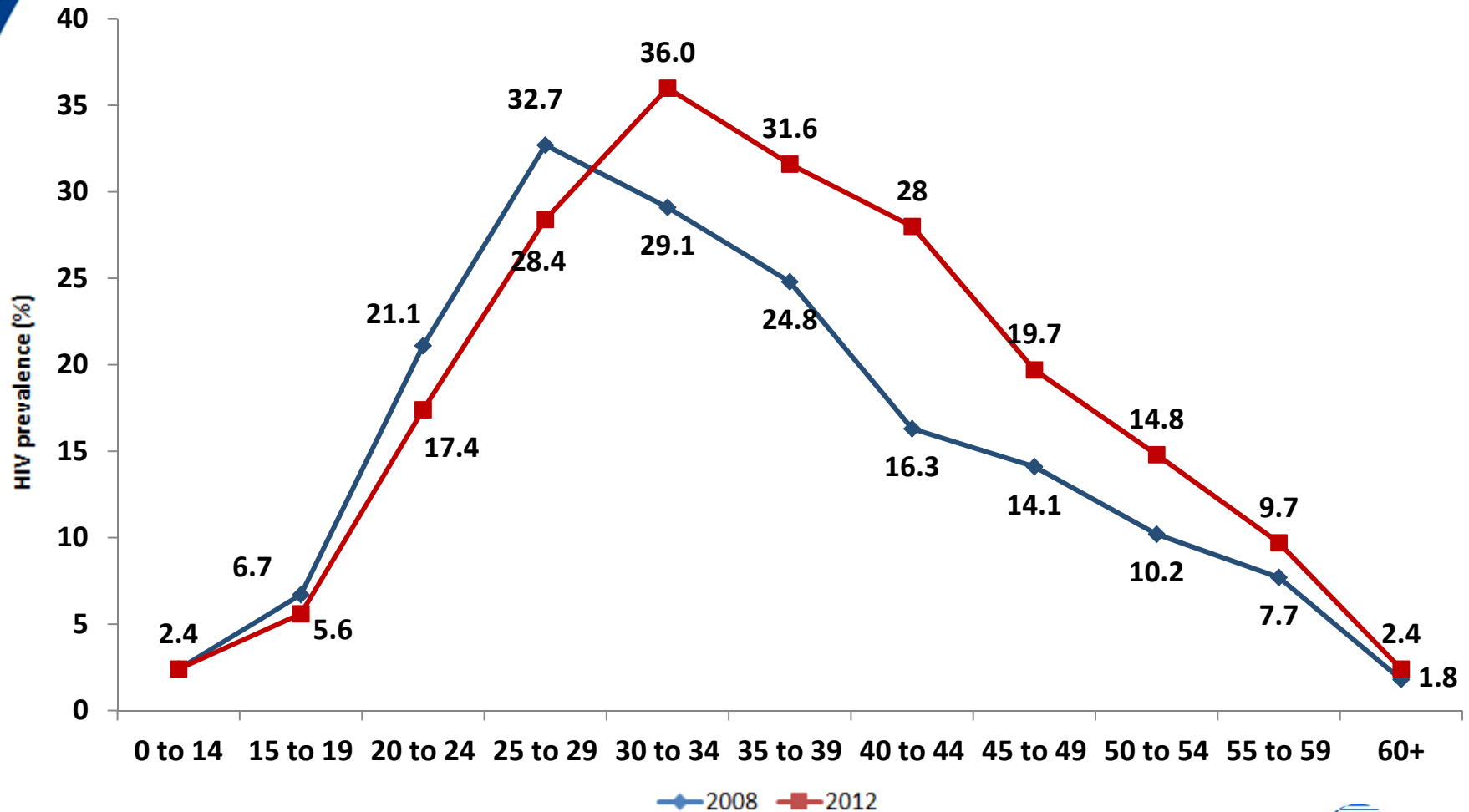
ART Exposure, South Africa mid-2012

Variable	Estimated number of people living with HIV (n)	Estimated number of people on ART (n)	Proportion of people living with HIV on ART (%) [95% CI]
National	6,422,000	2,002,000	31.2 [28.1-34.5]
Males	2,531,000	651,000	25.7 [21.2-30.8]
Females	3,873,000	1,344,000	34.7 [31.4-38.2]

ART Exposure by Age Group, South Africa mid-2012

Variable	Estimated number of people living with HIV (n)	Estimated number of people on ART (n)	Proportion of people living with HIV on ART (%) [95% CI]
Age group			
0-14	368,879	166,025	45.1 [33.9-56.9]
15-24	720,269	102,868	14.3 [10.0-20.0]
25-49	4,705,506	1,466,412	31.2 [27.4-35.2]
50 and older	610,323	260,490	42.7 [35.7-50.0]
15-49	5,425,776	1,569,280	28.9 [25.6-32.5]
Total	6,422,179	2,002,350	31.2 [28.1-34.5]

HIV prevalence among females, South Africa 2008-2012



HIV INCIDENCE





Measuring HIV incidence South Africa 2012

1. Direct HIV incidence using blood specimens
 - Multi - assay testing algorithm

HIV incidence rates by age group, South Africa 2012

Age Groups	HIV incidence % (95% CI)
Age ≥ 2years	
Total	1.07 (0.87 – 1.27)
Male	0.71 (0.57 - 0.85)
Female	1.46 (1.18 - 1.84)
Age 15-24 years	
Total	1.49 (1.21 – 1.88)
Male	0.55 (0.45 - 0.65)
Female	2.54 (2.04 - 3.04)
Age 15-49 years	
Total	1.72 (1.38 – 2.06)
Male	1.21 (0.97 - 1.45)
Female	2.28 (1.84 - 2.74)

HIV incidence rates by behavioral and socio-demographic variables (15-49 age group), South Africa 2012

Variables	HIV incidence % (95% CI)
Marital status	
Married	0.55 (0.45 - 0.65)
Single	2.28 (1.82 – 2.74)
Cohabiting (living together)	3.08 (2.48-3.68)
Number of sexual partners in the past 12 months	
One partner	1.67 (1.33 - 2.01)
More than one partner	2.43 (1.95 - 2.91)
Selected at-risk populations	
Black African females 20-34 years	4.54 (3.64-5.44)
Black African males 25-49 years	1.84 (1.48-2.20)

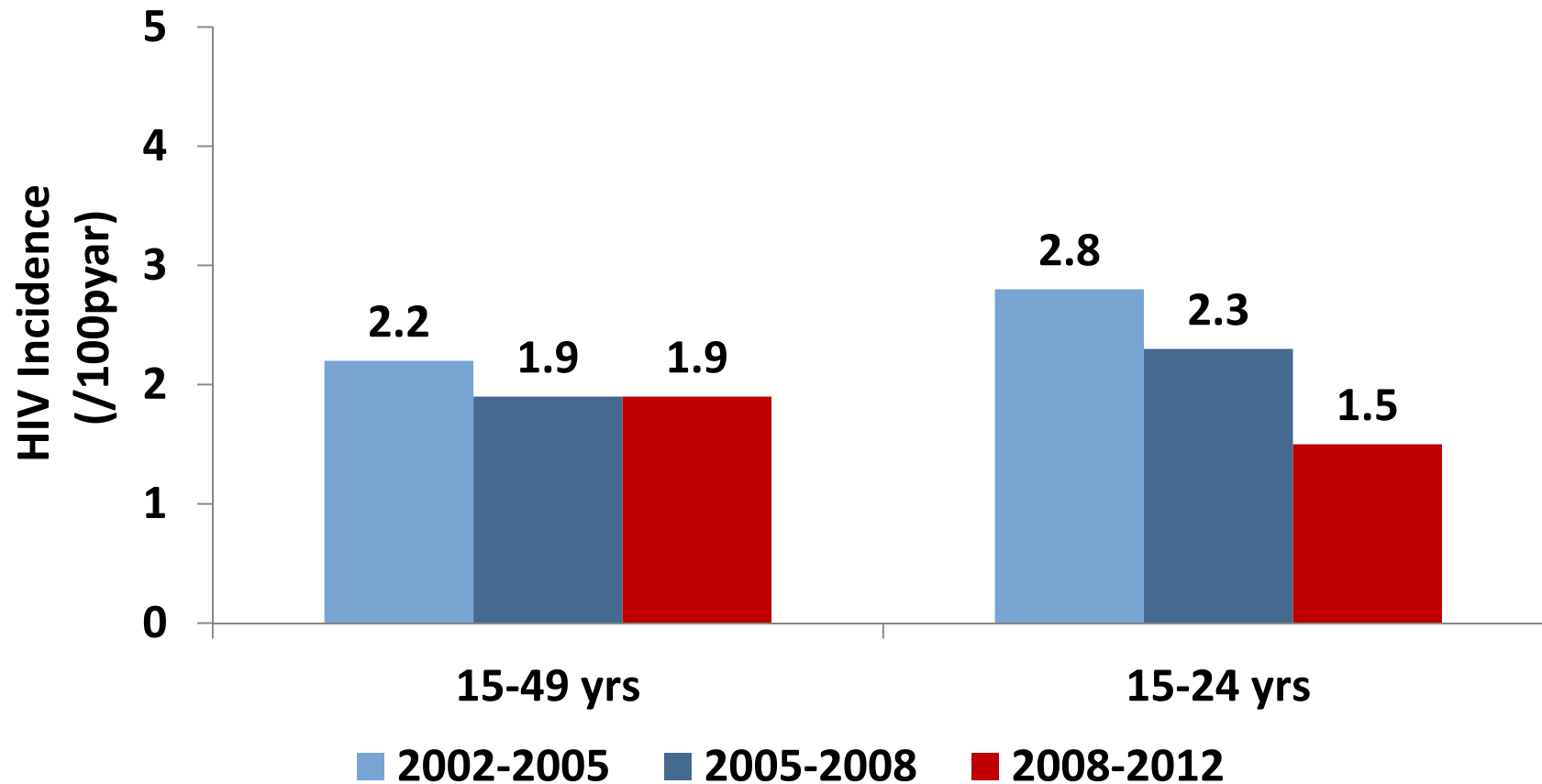


Measuring HIV incidence South Africa 2012

2. Indirect HIV incidence using a mathematical model

- HIV incidence estimation from HIV prevalence data collected in repeated national population-based surveys (HSRC 2002, 2005, 2008 & 2012)

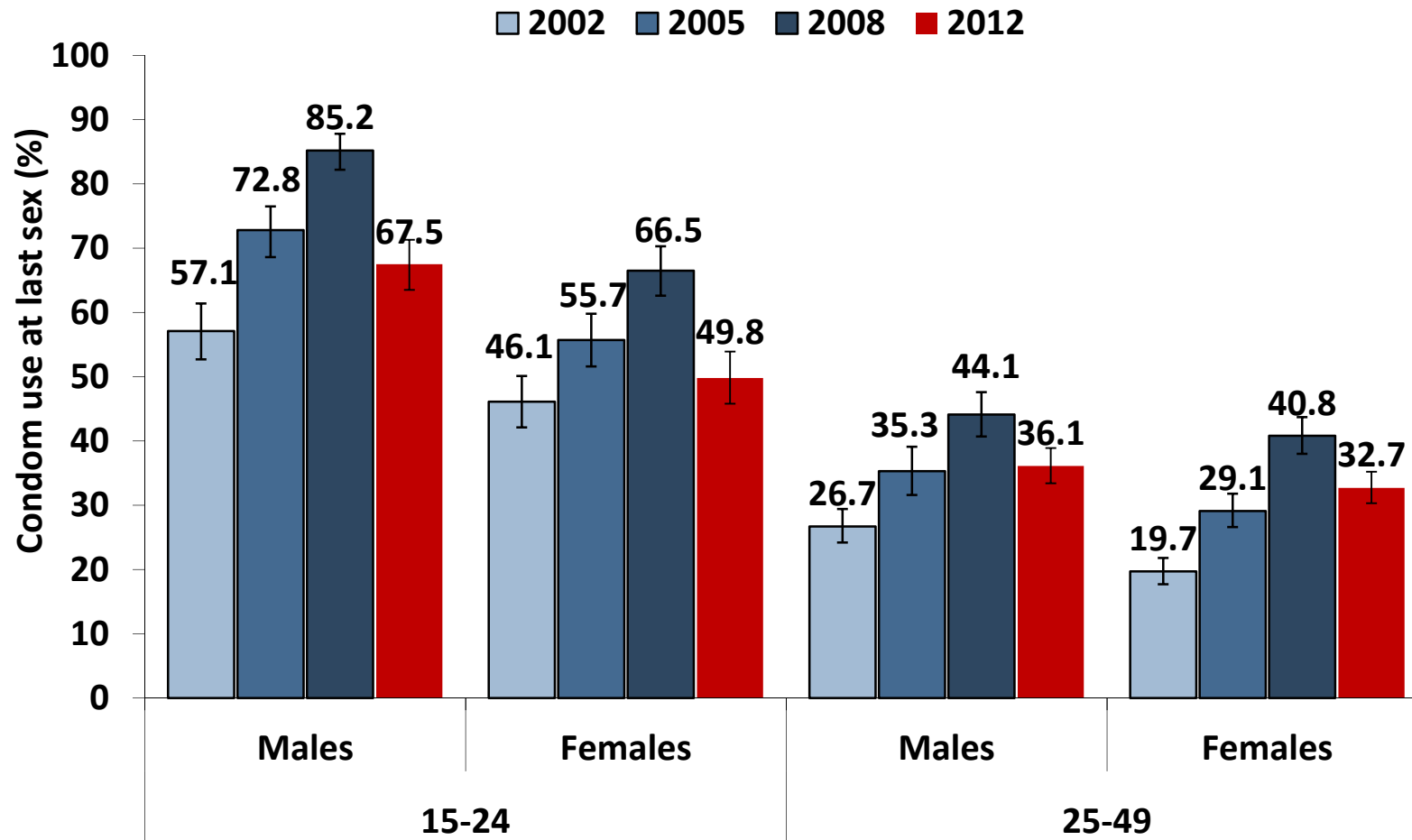
Modelled HIV incidence rates by age, South Africa 2002-2005, 2005-2008 and 2008-2012



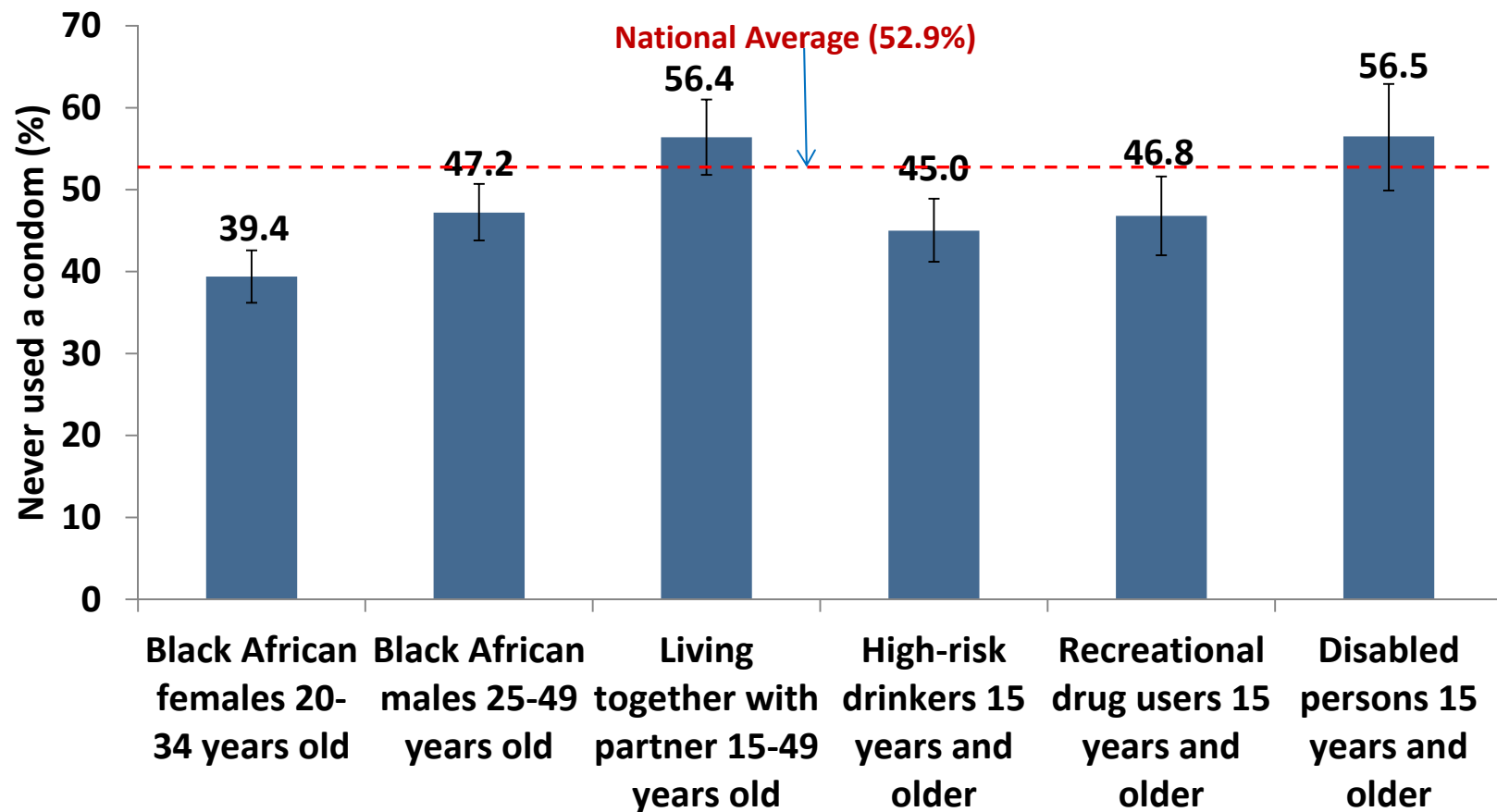
BEHAVIOURAL FINDINGS



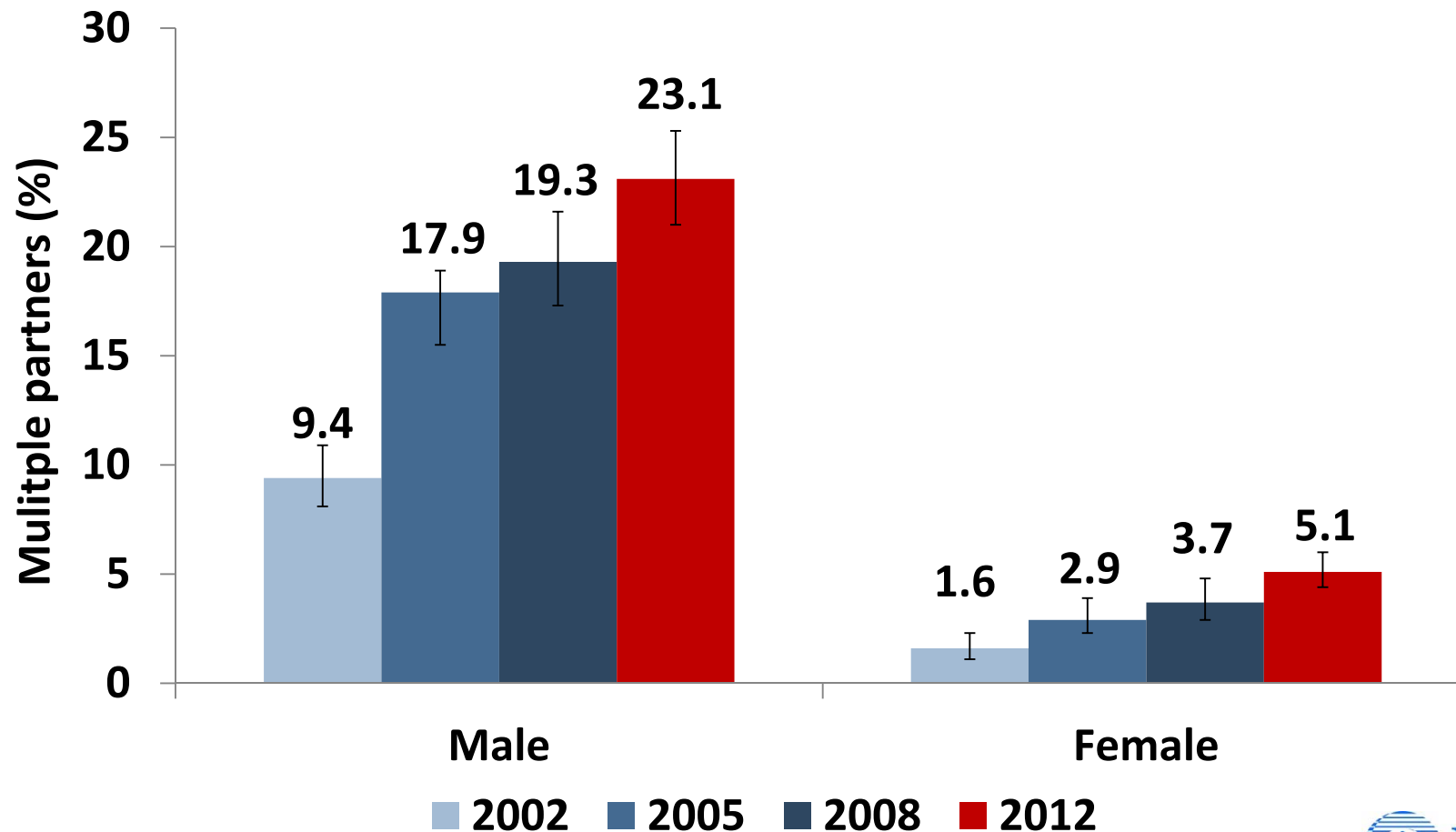
Condom use at last sex by age and sex, South Africa 2002-2012



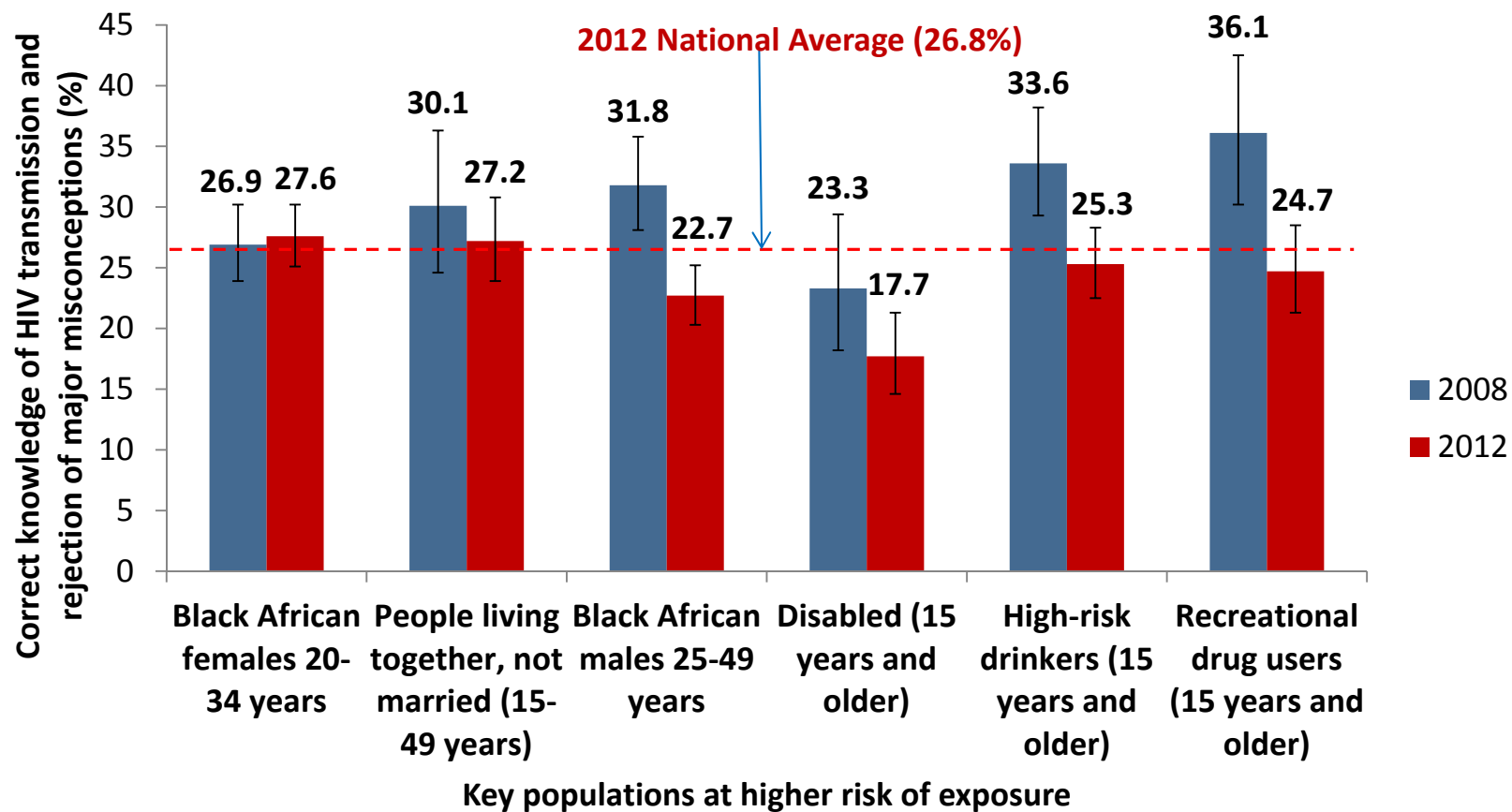
Never used a condom use among key populations, South Africa 2012



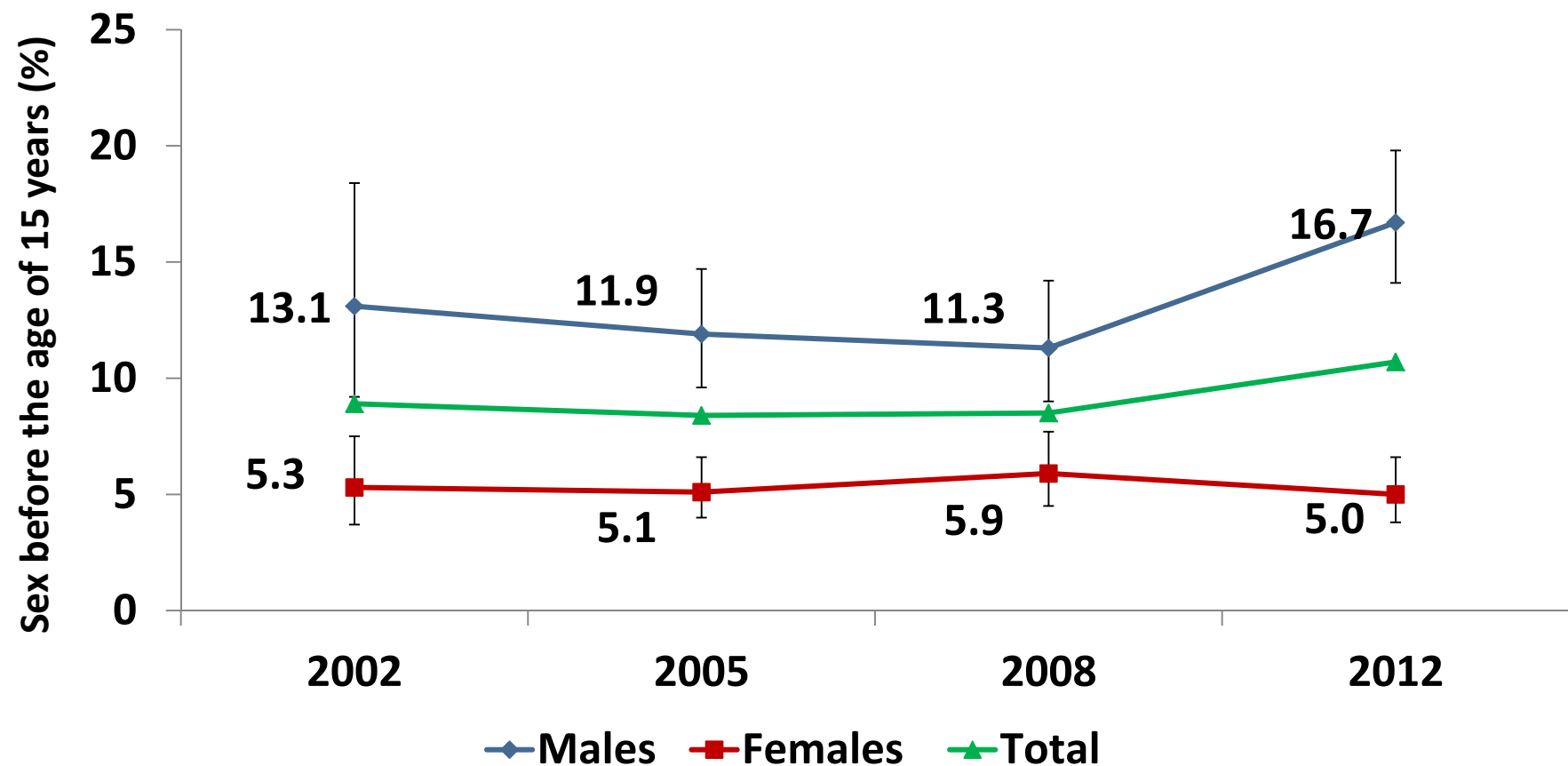
Multiple sexual partnerships (15-49 years), South Africa 2002-2012



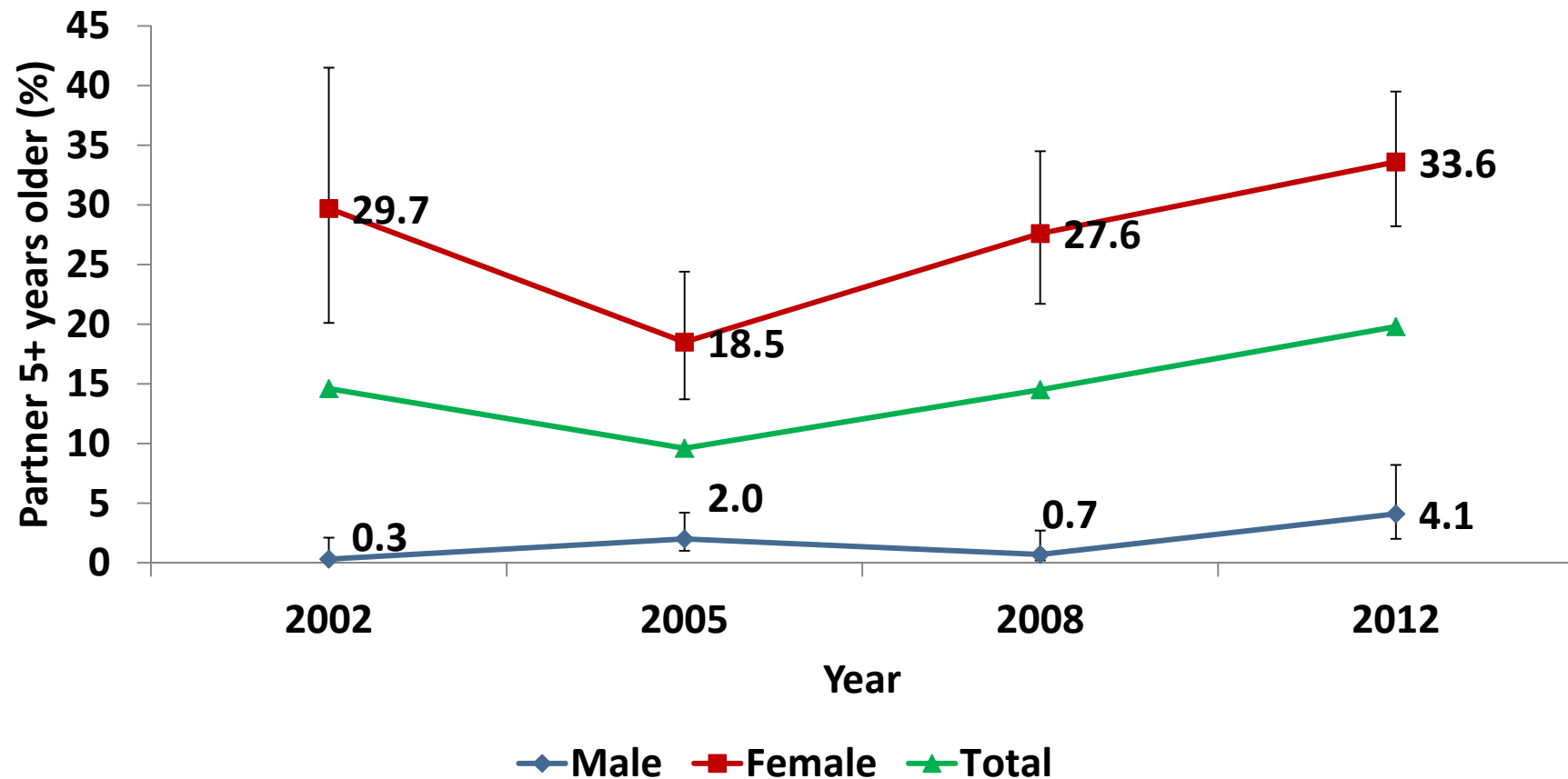
Correct HIV knowledge among key populations, South Africa 2008 and 2012



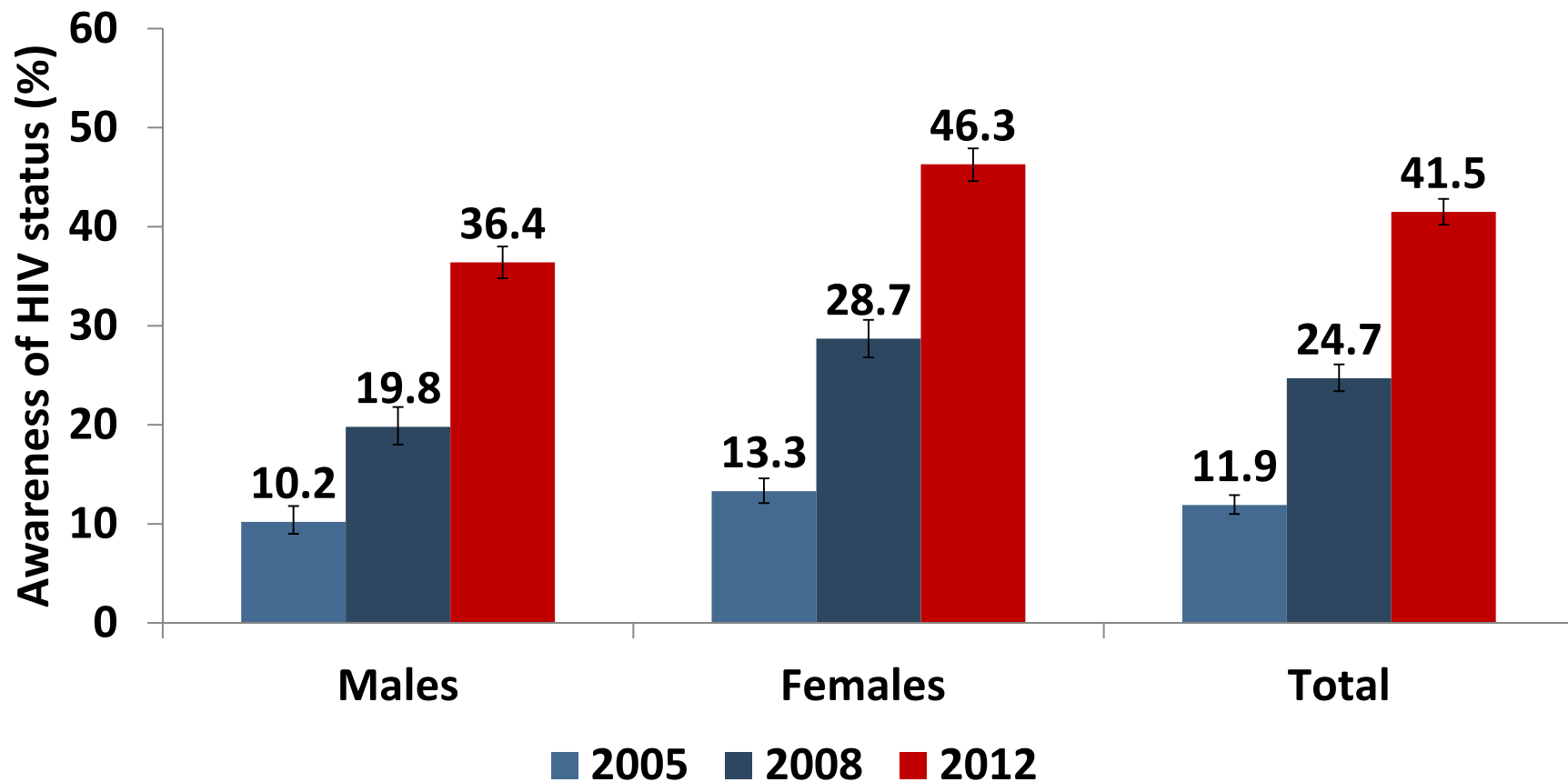
Sexual debut before age 15 years (15-24 years), South Africa 2002-2012



Age-disparate sexual relationships (15-19 years) by sex, South Africa 2005-2012



Awareness of HIV status among those who tested in the last 12 months, by sex (15 years and older), South Africa 2005-2012



Conclusions

- HIV prevalence increased substantially; gender, race & locality disparities continue
- Key populations at high risk of HIV exposure present a major source of concern
- Living together, not married, is associated with high HIV prevalence
- Increased exposure to ART
- HIV incidence remains at high levels, despite reduction in young women

Conclusion, continued

- HCT campaign increased awareness of HIV status
- Sexual debut of males before age 15 for 15-19 year olds has increased
- Increase in age-disparate relationships in females
- Multiple sexual partners have increased
- Condom use has declined
- Knowledge about sexual transmission of HIV is low

Recommendations

- Balance prevention and treatment
- Further strengthen and encourage HCT to address gender disparity
- Encourage consistent condom use
- Target key populations at high risk of HIV
- Encourage monogamy and faithfulness
- Promote HIV prevention in informal settlement

Research Collaborators

With financial support from:



BILL & MELINDA
GATES *foundation*

Research consortium



Funders

This research has been supported mainly by the President's Emergency Plan for AIDS Relief (PEPFAR) through CDC under the terms of Cooperative Agreement Numbers 5U2GPS000570-05 , 3U2GGH00357-02 and U2GPS001328.

The findings and conclusions in the report are those of the author(s) and do not necessarily represent the official positions of the Centers for Disease Control and Prevention





1918 – 2013
THANK YOU

